

Lookbook Index

5 MATERIAL GROUPS / 42 LOOKS / LUMIAO SPRING SUMMER 2026



GROUP 01

55% Silk / 35% paper / 10% Cashmere

09 LOOKS



GROUP 02

50% LINEN / 40% SILK / 10% Cashmere

12 LOOKS



GROUP 03

**5% LINEN / 20% POLYESTER / 30% PAPER /
45% VISCOSE**

10 LOOKS



GROUP 04

**58% COTTON / 20% LINEN / 11% SILK / 11%
POLYESTER**

06 LOOKS



GROUP 05

50% LINEN / 50% WOOL

05 LOOKS

All Lumiao SS27 fabrics comply with required fabric-swatch testing standards, covering pH, formaldehyde, restricted aromatic amines, fiber composition, dimensional stability, color fastness, and pilling performance.

Material Group 01

SPRING / SUMMER KNITWEAR MATERIAL STORY

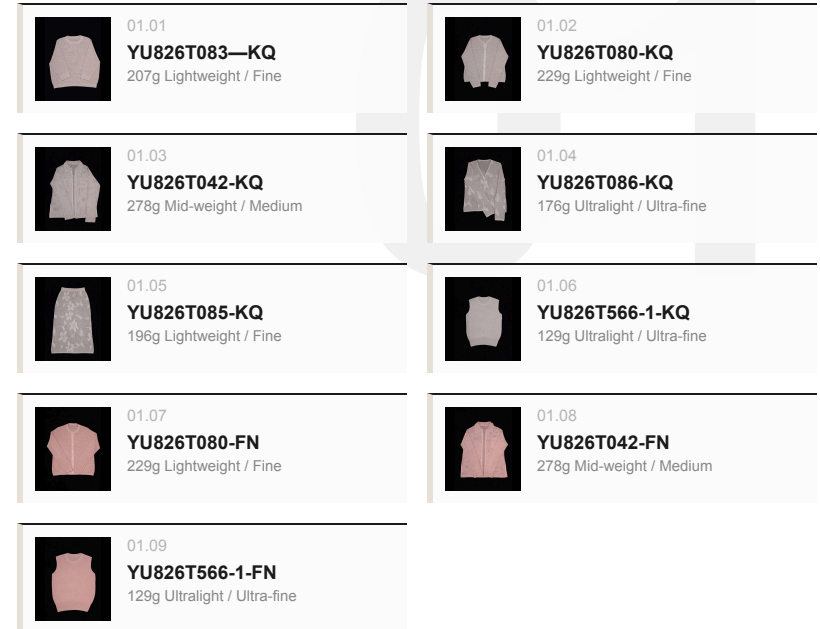
MATERIAL COMPOSITION

55% Silk / 35% paper / 10% Cashmere

09 LOOKS

YU826T083—KQ - YU826T566-1-FN

- Silk adds clean luster and a cool, smooth handfeel.
- Cashmere softens the surface while keeping the garment light.
- Paper yarn brings dry texture, airy structure, and crisp volume.



Lumiao SS27 Preview

SPRING / SUMMER KNITWEAR LOOKBOOK

NO.YU826T083—KQ

MATERIAL COMPOSITION

Yarn A (1/16Nm)

55% Silk / 35% paper / 10% Cashmere

CRAFTSMANSHIP

12-Gauge Fine Knit

NET WEIGHT

207g Lightweight / Fine

Curated materials, redefining everyday wear.



FRONT VIEW



REAR VIEW

Lumiao SS27 Preview

SPRING / SUMMER KNITWEAR LOOKBOOK

NO.YU826T080-KQ

MATERIAL COMPOSITION

Yarn A (1/16Nm)

55% Silk / 35% paper / 10% Cashmere

CRAFTSMANSHIP

12-Gauge Fine Knit

NET WEIGHT

229g Lightweight / Fine

Curated materials, redefining everyday wear.



FRONT VIEW



REAR VIEW

Lumiao SS27 Preview

SPRING / SUMMER KNITWEAR LOOKBOOK

NO.YU826T042-KQ

MATERIAL COMPOSITION

Yarn A (1/16Nm)

55% Silk / 35% paper / 10% Cashmere

CRAFTSMANSHIP

12-Gauge Fine Knit

NET WEIGHT

278g Mid-weight /
Medium

Curated materials, redefining everyday wear.



FRONT VIEW



REAR VIEW

Lumiao SS27 Preview

SPRING / SUMMER KNITWEAR LOOKBOOK

NO.YU826T086-KQ

MATERIAL COMPOSITION

Yarn A (1/16Nm)

55% Silk / 35% paper / 10% Cashmere

CRAFTSMANSHIP

12-Gauge Fine Knit

NET WEIGHT

176g Ultralight / Ultra-fine

Curated materials, redefining everyday wear.



FRONT VIEW



REAR VIEW

Lumiao SS27 Preview

SPRING / SUMMER KNITWEAR LOOKBOOK

NO.YU826T085-KQ

MATERIAL COMPOSITION

Yarn A (1/16Nm)

55% Silk / 35% paper / 10% Cashmere

CRAFTSMANSHIP

12-Gauge Fine Knit

NET WEIGHT

196g Lightweight / Fine

Curated materials, redefining everyday wear.



FRONT VIEW



REAR VIEW

Lumiao SS27 Preview

SPRING / SUMMER KNITWEAR LOOKBOOK

NO.YU826T566-1-KQ

MATERIAL COMPOSITION

Yarn A (1/16Nm)

55% Silk / 35% paper / 10% Cashmere

CRAFTSMANSHIP

12-Gauge Fine Knit

NET WEIGHT

129g Ultralight / Ultra-fine

Curated materials, redefining everyday wear.



FRONT VIEW



REAR VIEW

Lumiao SS27 Preview

SPRING / SUMMER KNITWEAR LOOKBOOK

NO.YU826T080-FN

MATERIAL COMPOSITION

Yarn A (1/16Nm)

55% Silk / 35% paper / 10% Cashmere

CRAFTSMANSHIP

12-Gauge Fine Knit

NET WEIGHT

229g Lightweight / Fine

Curated materials, redefining everyday wear.



FRONT VIEW



REAR VIEW

Lumiao SS27 Preview

SPRING / SUMMER KNITWEAR LOOKBOOK

NO.YU826T042-FN

MATERIAL COMPOSITION

Yarn A (1/16Nm)

55% Silk / 35% paper / 10% Cashmere

CRAFTSMANSHIP

12-Gauge Fine Knit

NET WEIGHT

278g Mid-weight /
Medium

Curated materials, redefining everyday wear.



FRONT VIEW



REAR VIEW

Lumiao SS27 Preview

SPRING / SUMMER KNITWEAR LOOKBOOK

NO.YU826T566-1-FN

MATERIAL COMPOSITION

Yarn A (1/16Nm)

55% Silk / 35% paper / 10% Cashmere

CRAFTSMANSHIP

12-Gauge Fine Knit

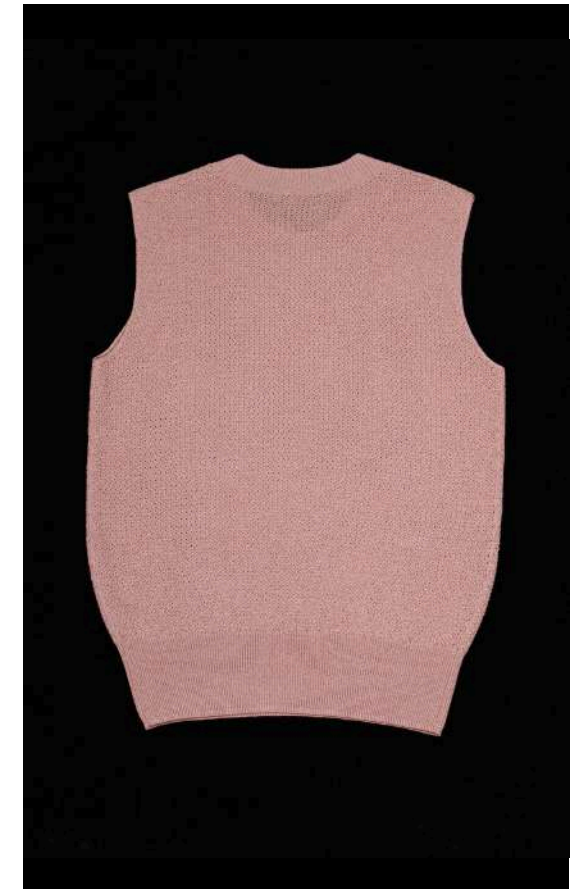
NET WEIGHT

129g Ultralight / Ultra-fine

Curated materials, redefining everyday wear.



FRONT VIEW



REAR VIEW

Material Group 02

SPRING / SUMMER KNITWEAR MATERIAL STORY

MATERIAL COMPOSITION

50% LINEN / 40% SILK / 10% Cashmere

12 LOOKS

YL726T069—BL - YL726T036—WT

- Silk adds clean luster and a cool, smooth handfeel.
- Cashmere softens the surface while keeping the garment light.
- Linen supports breathability with a natural, summer-weight texture.



Lumiao SS27 Preview

SPRING / SUMMER KNITWEAR LOOKBOOK

NO.YL726T069—BL

MATERIAL COMPOSITION

Yarn A (1/23Nm)

50% LINEN / 40% SILK / 10% Cashmere

CRAFTSMANSHIP

16-Gauge Fine Knit

NET WEIGHT

171g Ultralight / Ultra-fine

Curated materials, redefining everyday wear.



FRONT VIEW



REAR VIEW

Lumiao SS27 Preview

SPRING / SUMMER KNITWEAR LOOKBOOK

NO.YL726T070—BL

MATERIAL COMPOSITION

Yarn A (1/23Nm)

50% LINEN / 40% SILK / 10% Cashmere

CRAFTSMANSHIP

16-Gauge Fine Knit

NET WEIGHT

101g Ultralight / Ultra-fine

Curated materials, redefining everyday wear.



FRONT VIEW



REAR VIEW

Lumiao SS27 Preview

SPRING / SUMMER KNITWEAR LOOKBOOK

NO.YL726T076—BL

MATERIAL COMPOSITION

Yarn A (1/23Nm)

50% LINEN / 40% SILK / 10% Cashmere

CRAFTSMANSHIP

16-Gauge Fine Knit

NET WEIGHT

135g Ultralight / Ultra-fine

Curated materials, redefining everyday wear.



FRONT VIEW



REAR VIEW

Lumiao SS27 Preview

SPRING / SUMMER KNITWEAR LOOKBOOK

NO.YL726T035—BL

MATERIAL COMPOSITION

Yarn A (1/23Nm)

50% LINEN / 40% SILK / 10% Cashmere

CRAFTSMANSHIP

16-Gauge Fine Knit

NET WEIGHT

103g Ultralight / Ultra-fine

Curated materials, redefining everyday wear.



FRONT VIEW



REAR VIEW

Lumiao SS27 Preview

SPRING / SUMMER KNITWEAR LOOKBOOK

NO.YL726T036—BL

MATERIAL COMPOSITION

Yarn A (1/23Nm)

50% LINEN / 40% SILK / 10% Cashmere

CRAFTSMANSHIP

16-Gauge Fine Knit

NET WEIGHT

168g Ultralight / Ultra-fine

Curated materials, redefining everyday wear.



FRONT VIEW



REAR VIEW

Lumiao SS27 Preview

SPRING / SUMMER KNITWEAR LOOKBOOK

NO.YL726T041—BL

MATERIAL COMPOSITION

Yarn A (1/23Nm)

50% LINEN / 40% SILK / 10% Cashmere

CRAFTSMANSHIP

16-Gauge Fine Knit

NET WEIGHT

146g Ultralight / Ultra-fine

Curated materials, redefining everyday wear.



FRONT VIEW



REAR VIEW

Lumiao SS27 Preview

SPRING / SUMMER KNITWEAR LOOKBOOK

NO.YL726T069—WT

MATERIAL COMPOSITION

Yarn A (1/23Nm)

50% LINEN / 40% SILK / 10% Cashmere

CRAFTSMANSHIP

16-Gauge Fine Knit

NET WEIGHT

171g Ultralight / Ultra-fine

Curated materials, redefining everyday wear.



FRONT VIEW



REAR VIEW

Lumiao SS27 Preview

SPRING / SUMMER KNITWEAR LOOKBOOK

NO.YL726T070—WT

MATERIAL COMPOSITION

Yarn A (1/23Nm)

50% LINEN / 40% SILK / 10% Cashmere

CRAFTSMANSHIP

16-Gauge Fine Knit

NET WEIGHT

101g Ultralight / Ultra-fine

Curated materials, redefining everyday wear.



FRONT VIEW



REAR VIEW

Lumiao SS27 Preview

SPRING / SUMMER KNITWEAR LOOKBOOK

NO.YL726T041—WT

MATERIAL COMPOSITION

Yarn A (1/23Nm)

50% LINEN / 40% SILK / 10% Cashmere

CRAFTSMANSHIP

16-Gauge Fine Knit

NET WEIGHT

146g Ultralight / Ultra-fine

Curated materials, redefining everyday wear.



FRONT VIEW



REAR VIEW

Lumiao SS27 Preview

SPRING / SUMMER KNITWEAR LOOKBOOK

NO.YL726T035—WT

MATERIAL COMPOSITION

Yarn A (1/23Nm)

50% LINEN / 40% SILK / 10% Cashmere

CRAFTSMANSHIP

16-Gauge Fine Knit

NET WEIGHT

103g Ultralight / Ultra-fine

Curated materials, redefining everyday wear.



FRONT VIEW



REAR VIEW

Lumiao SS27 Preview

SPRING / SUMMER KNITWEAR LOOKBOOK

NO.YL726T076—WT

MATERIAL COMPOSITION

Yarn A (1/23Nm)

50% LINEN / 40% SILK / 10% Cashmere

CRAFTSMANSHIP

16-Gauge Fine Knit

NET WEIGHT

135g Ultralight / Ultra-fine

Curated materials, redefining everyday wear.



FRONT VIEW



REAR VIEW

Lumiao SS27 Preview

SPRING / SUMMER KNITWEAR LOOKBOOK

NO.YL726T036—WT

MATERIAL COMPOSITION

Yarn A (1/23Nm)

50% LINEN / 40% SILK / 10% Cashmere

CRAFTSMANSHIP

16-Gauge Fine Knit

NET WEIGHT

168g Ultralight / Ultra-fine

Curated materials, redefining everyday wear.



FRONT VIEW



REAR VIEW

Material Group 03

SPRING / SUMMER KNITWEAR MATERIAL STORY

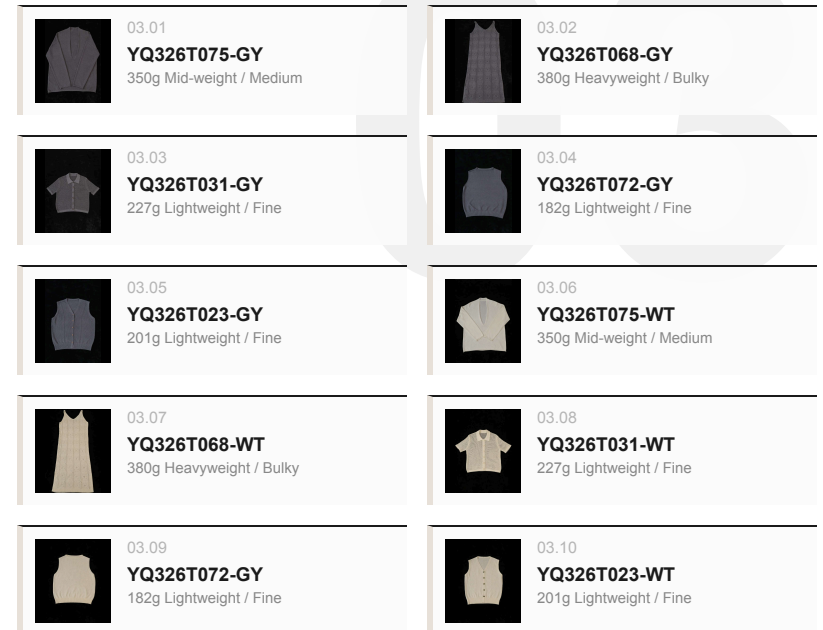
MATERIAL COMPOSITION

**5% LINEN / 20% POLYESTER / 30% PAPER
/ 45% VISCOSE**

10 LOOKS

YQ326T075-GY - YQ326T023-WT

- Paper yarn brings dry texture, airy structure, and crisp volume.
- Linen supports breathability with a natural, summer-weight texture.
- Viscose improves drape and gives the knit a softer fall.
- Polyester helps shape retention for daily wear.



Lumiao SS27 Preview

SPRING / SUMMER KNITWEAR LOOKBOOK

NO.YQ326T075-GY

MATERIAL COMPOSITION

Yarn A (1/7.6Nm)

5% LINEN / 20% POLYESTER / 30% PAPER / 45%
VISCOSE

CRAFTSMANSHIP

7-Gauge Fine Knit

NET WEIGHT

350g Mid-weight /
Medium

Curated materials, redefining everyday wear.



FRONT VIEW



REAR VIEW

Lumiao SS27 Preview

SPRING / SUMMER KNITWEAR LOOKBOOK

NO.YQ326T068-GY

MATERIAL COMPOSITION

Yarn A (1/7.6Nm)

5% LINEN / 20% POLYESTER / 30% PAPER / 45%
VISCOSE

CRAFTSMANSHIP

7-Gauge Fine Knit

NET WEIGHT

380g Heavyweight /
Bulky

Curated materials, redefining everyday wear.



FRONT VIEW



REAR VIEW

Lumiao SS27 Preview

SPRING / SUMMER KNITWEAR LOOKBOOK

NO.YQ326T031-GY

MATERIAL COMPOSITION

Yarn A (1/7.6Nm)

5% LINEN / 20% POLYESTER / 30% PAPER / 45%
VISCOSE

CRAFTSMANSHIP

7-Gauge Fine Knit

NET WEIGHT

227g Lightweight / Fine

Curated materials, redefining everyday wear.



FRONT VIEW



REAR VIEW

Lumiao SS27 Preview

SPRING / SUMMER KNITWEAR LOOKBOOK

NO.YQ326T072-GY

MATERIAL COMPOSITION

Yarn A (1/7.6Nm)

5% LINEN / 20% POLYESTER / 30% PAPER / 45%
VISCOSE

CRAFTSMANSHIP

7-Gauge Fine Knit

NET WEIGHT

182g Lightweight / Fine

Curated materials, redefining everyday wear.



FRONT VIEW



REAR VIEW

Lumiao SS27 Preview

SPRING / SUMMER KNITWEAR LOOKBOOK

NO.YQ326T023-GY

MATERIAL COMPOSITION

Yarn A (1/7.6Nm)

5% LINEN / 20% POLYESTER / 30% PAPER / 45%
VISCOSE

CRAFTSMANSHIP

7-Gauge Fine Knit

NET WEIGHT

201g Lightweight / Fine

Curated materials, redefining everyday wear.



FRONT VIEW



REAR VIEW

Lumiao SS27 Preview

SPRING / SUMMER KNITWEAR LOOKBOOK

NO.YQ326T075-WT

MATERIAL COMPOSITION

Yarn A (1/7.6Nm)

5% LINEN / 20% POLYESTER / 30% PAPER / 45%
VISCOSE

CRAFTSMANSHIP

7-Gauge Fine Knit

NET WEIGHT

350g Mid-weight /
Medium

Curated materials, redefining everyday wear.



FRONT VIEW



REAR VIEW

Lumiao SS27 Preview

SPRING / SUMMER KNITWEAR LOOKBOOK

NO.YQ326T068-WT

MATERIAL COMPOSITION

Yarn A (1/7.6Nm)

5% LINEN / 20% POLYESTER / 30% PAPER / 45%
VISCOSE

CRAFTSMANSHIP

7-Gauge Fine Knit

NET WEIGHT

380g Heavyweight /
Bulky

Curated materials, redefining everyday wear.



FRONT VIEW



REAR VIEW

Lumiao SS27 Preview

SPRING / SUMMER KNITWEAR LOOKBOOK

NO.YQ326T031-WT

MATERIAL COMPOSITION

Yarn A (1/7.6Nm)

5% LINEN / 20% POLYESTER / 30% PAPER / 45%
VISCOSE

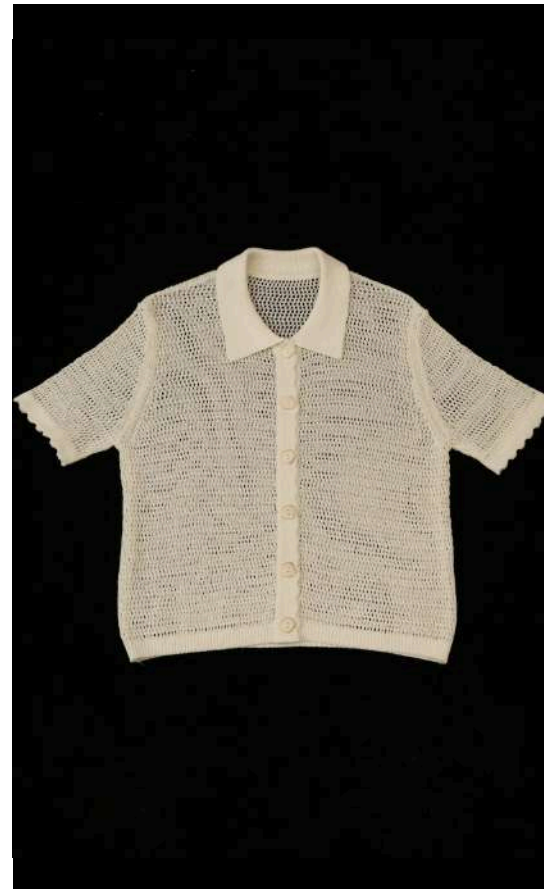
CRAFTSMANSHIP

7-Gauge Fine Knit

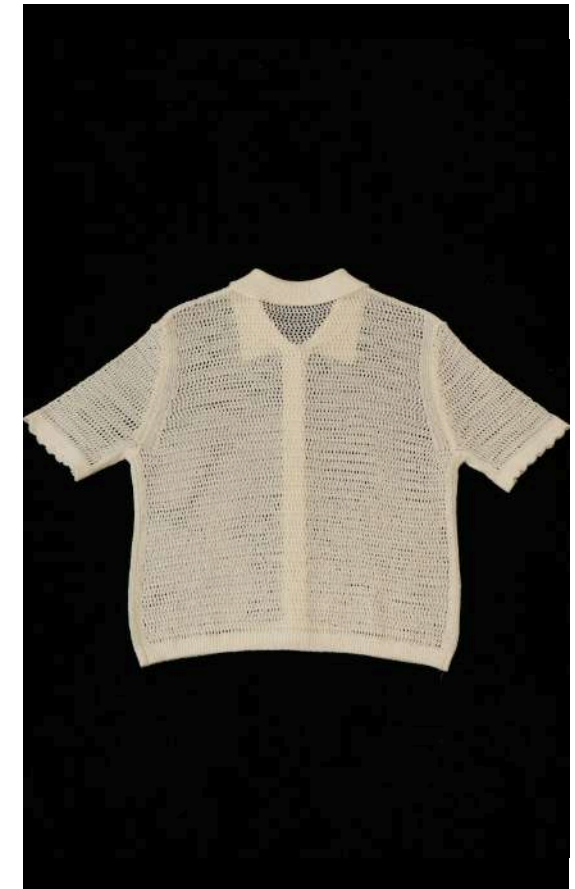
NET WEIGHT

227g Lightweight / Fine

Curated materials, redefining everyday wear.



FRONT VIEW



REAR VIEW

Lumiao SS27 Preview

SPRING / SUMMER KNITWEAR LOOKBOOK

NO.YQ326T072-GY

MATERIAL COMPOSITION

Yarn A (1/7.6Nm)

5% LINEN / 20% POLYESTER / 30% PAPER / 45%
VISCOSE

CRAFTSMANSHIP

7-Gauge Fine Knit

NET WEIGHT

182g Lightweight / Fine

Curated materials, redefining everyday wear.



FRONT VIEW



REAR VIEW

Lumiao SS27 Preview

SPRING / SUMMER KNITWEAR LOOKBOOK

NO.YQ326T023-WT

MATERIAL COMPOSITION

Yarn A (1/7.6Nm)

5% LINEN / 20% POLYESTER / 30% PAPER / 45%
VISCOSE

CRAFTSMANSHIP

7-Gauge Fine Knit

NET WEIGHT

201g Lightweight / Fine

Curated materials, redefining everyday wear.



FRONT VIEW



REAR VIEW

Material Group 04

SPRING / SUMMER KNITWEAR MATERIAL STORY

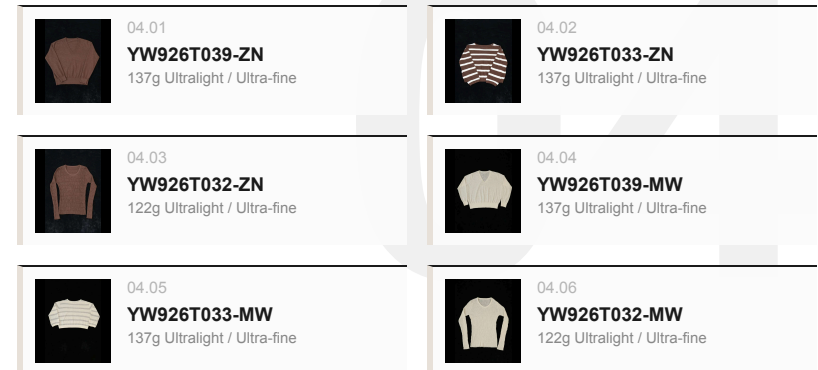
MATERIAL COMPOSITION

**58% COTTON / 20% LINEN / 11% SILK /
11% POLYESTER**

06 LOOKS

YW926T039-ZN - YW926T032-MW

- Silk adds clean luster and a cool, smooth handfeel.
- Linen supports breathability with a natural, summer-weight texture.
- Polyester helps shape retention for daily wear.
- Cotton keeps the touch familiar, breathable, and easy against skin.



Lumiao SS27 Preview

SPRING / SUMMER KNITWEAR LOOKBOOK

NO.YW926T039-ZN

MATERIAL COMPOSITION

Yarn A (1/38NM)

58% COTTON / 20% LINEN / 11% SILK / 11%
POLYESTER

CRAFTSMANSHIP

16-Gauge Fine Knit

NET WEIGHT

137g Ultralight / Ultra-
fine

Curated materials, redefining everyday wear.



FRONT VIEW



REAR VIEW

Lumiao SS27 Preview

SPRING / SUMMER KNITWEAR LOOKBOOK

NO.YW926T033-ZN

MATERIAL COMPOSITION

Yarn A (1/38NM)

58% COTTON / 20% LINEN / 11% SILK / 11%
POLYESTER

CRAFTSMANSHIP

16-Gauge Fine Knit

NET WEIGHT

137g Ultralight / Ultra-
fine

Curated materials, redefining everyday wear.



FRONT VIEW



REAR VIEW

Lumiao SS27 Preview

SPRING / SUMMER KNITWEAR LOOKBOOK

NO.YW926T032-ZN

MATERIAL COMPOSITION

Yarn A (1/38NM)

58% COTTON / 20% LINEN / 11% SILK / 11%
POLYESTER

CRAFTSMANSHIP

16-Gauge Fine Knit

NET WEIGHT

122g Ultralight / Ultra-
fine

Curated materials, redefining everyday wear.



FRONT VIEW



REAR VIEW

Lumiao SS27 Preview

SPRING / SUMMER KNITWEAR LOOKBOOK

NO. YW926T039-MW

MATERIAL COMPOSITION

Yarn A (1/38NM)

58% COTTON / 20% LINEN / 11% SILK / 11%
POLYESTER

CRAFTSMANSHIP

16-Gauge Fine Knit

NET WEIGHT

137g Ultralight / Ultra-
fine

Curated materials, redefining everyday wear.



FRONT VIEW



REAR VIEW

Lumiao SS27 Preview

SPRING / SUMMER KNITWEAR LOOKBOOK

NO. YW926T033-MW

MATERIAL COMPOSITION

Yarn A (1/38NM)

58% COTTON / 20% LINEN / 11% SILK / 11%
POLYESTER

CRAFTSMANSHIP

16-Gauge Fine Knit

NET WEIGHT

137g Ultralight / Ultra-
fine

Curated materials, redefining everyday wear.



FRONT VIEW



REAR VIEW

Lumiao SS27 Preview

SPRING / SUMMER KNITWEAR LOOKBOOK

NO.YW926T032-MW

MATERIAL COMPOSITION

Yarn A (1/38NM)

58% COTTON / 20% LINEN / 11% SILK / 11%
POLYESTER

CRAFTSMANSHIP

16-Gauge Fine Knit

NET WEIGHT

122g Ultralight / Ultra-
fine

Curated materials, redefining everyday wear.



FRONT VIEW



REAR VIEW

Material Group 05

SPRING / SUMMER KNITWEAR MATERIAL STORY

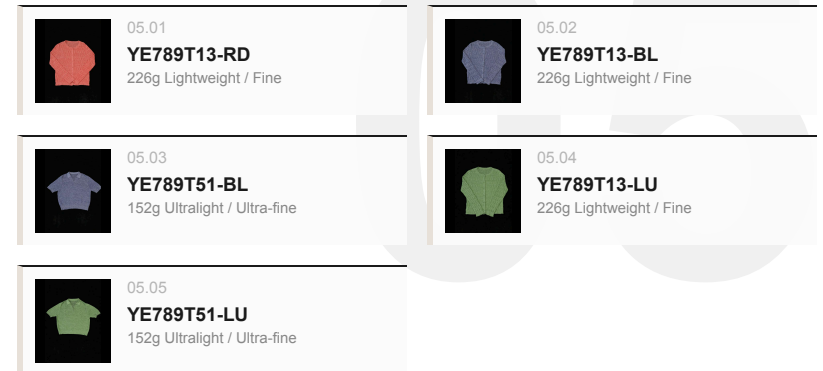
MATERIAL COMPOSITION

50% LINEN / 50% WOOL

05 LOOKS

YE789T13-RD - YE789T51-LU

- Linen supports breathability with a natural, summer-weight texture.
- Wool adds body and a warmer, more dimensional hand.



Lumiao SS27 Preview

SPRING / SUMMER KNITWEAR LOOKBOOK

NO.YE789T13-RD

MATERIAL COMPOSITION

Yarn A (2/50NM)
50% LINEN / 50% WOOL

CRAFTSMANSHIP

12-Gauge Fine Knit

NET WEIGHT

226g Lightweight / Fine

Curated materials, redefining everyday wear.



FRONT VIEW



REAR VIEW

Lumiao SS27 Preview

SPRING / SUMMER KNITWEAR LOOKBOOK

NO.YE789T13-BL

MATERIAL COMPOSITION

Yarn A (2/50NM)
50% LINEN / 50% WOOL

CRAFTSMANSHIP

12-Gauge Fine Knit

NET WEIGHT

226g Lightweight / Fine

Curated materials, redefining everyday wear.



FRONT VIEW



REAR VIEW

Lumiao SS27 Preview

SPRING / SUMMER KNITWEAR LOOKBOOK

NO.YE789T51-BL

MATERIAL COMPOSITION

Yarn A (2/50NM)
50% LINEN / 50% WOOL

CRAFTSMANSHIP

12-Gauge Fine Knit

NET WEIGHT

152g Ultralight / Ultra-fine

Curated materials, redefining everyday wear.



FRONT VIEW



REAR VIEW

Lumiao SS27 Preview

SPRING / SUMMER KNITWEAR LOOKBOOK

NO.YE789T13-LU

MATERIAL COMPOSITION

Yarn A (2/50NM)
50% LINEN / 50% WOOL

CRAFTSMANSHIP

12-Gauge Fine Knit

NET WEIGHT

226g Lightweight / Fine

Curated materials, redefining everyday wear.



FRONT VIEW



REAR VIEW

Lumiao SS27 Preview

SPRING / SUMMER KNITWEAR LOOKBOOK

NO.YE789T51-LU

MATERIAL COMPOSITION

Yarn A (2/50NM)
50% LINEN / 50% WOOL

CRAFTSMANSHIP

12-Gauge Fine Knit

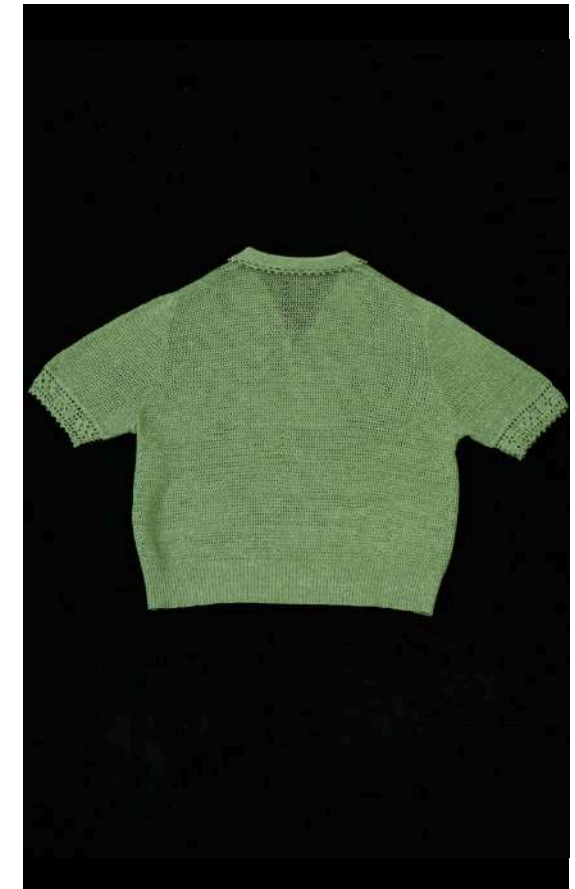
NET WEIGHT

152g Ultralight / Ultra-fine

Curated materials, redefining everyday wear.



FRONT VIEW



REAR VIEW